

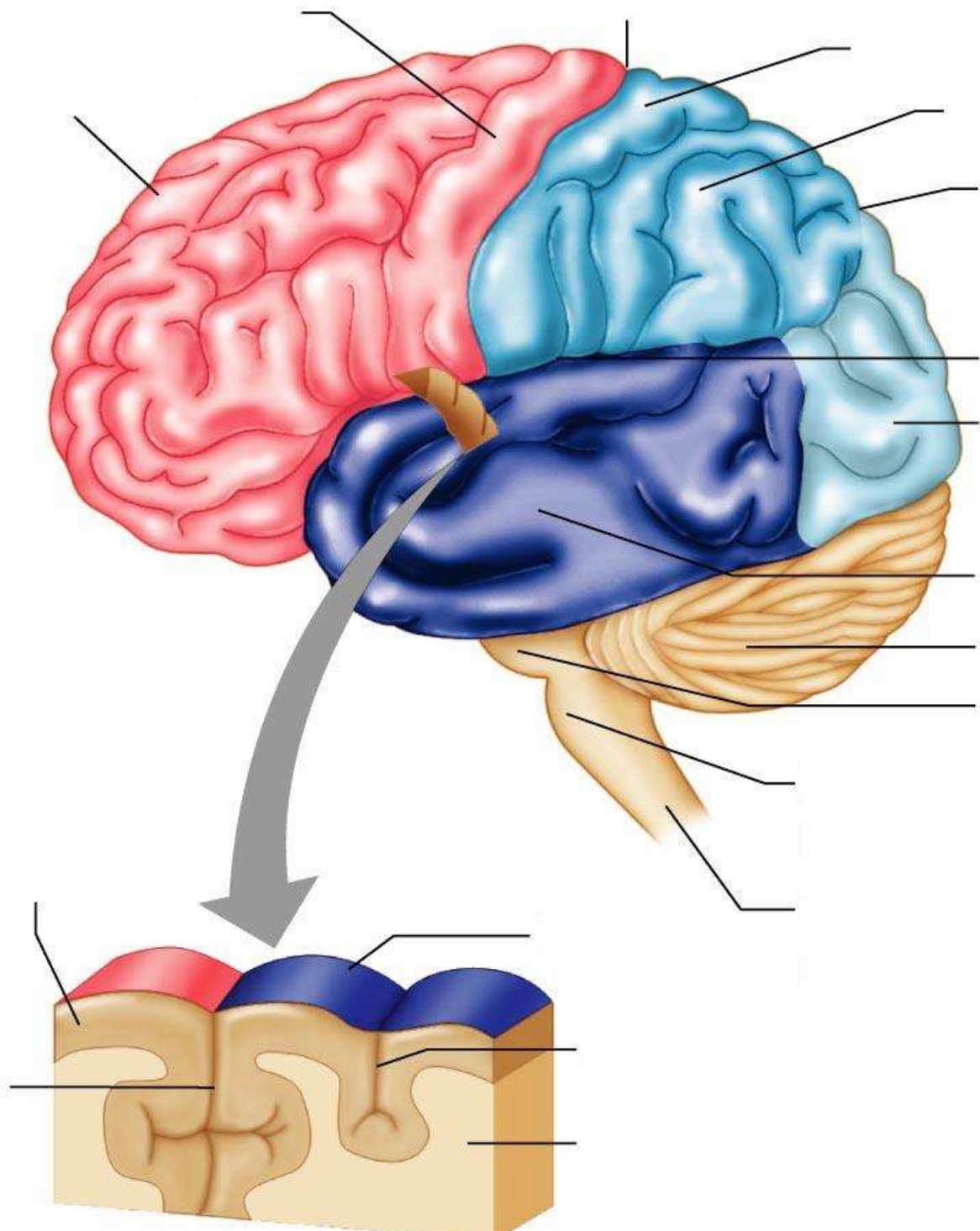
(c)

Copyright © 2009 Pearson Education, Inc., publishing as Pearson Benjamin Cummings.

List the function of the following parts of the brain:

1. Primary somatic sensory area -

2. Primary motor area –
3. Frontal association area –
4. Broca's area –
5. Language comprehension area –
6. Olfactory area –
7. Auditory area –
8. Gustatory area –
9. Speech/language area –
10. General interpretation area –
11. Visual area –



In what parts of the brain to the following functions happen?

Higher level intellectual reasoning and socially acceptable behavior

Complex memories